



# SPECTRUM OF POSSIBILITIES

Where Colours Create A New Picture of Steel.



**LATIM**  
*Vibrant Shades*  
COLOUR COATED STEEL

# COMPANY INTRODUCTION

## WELCOME TO THE WORLD OF LA TIM GROUP.

The group is built on a foundation of trust, transparency and a commitment to excellence.

The LA TIM Group was established in 1986 and has today grown into many business verticals, giving our partners many opportunities to soar with us.

From Steel to Hospitality and Realty, LA TIM Group brings varied experiences and opportunities to its customers.

**We call it a spectrum of possibilities.**

## LATIM STEEL

Since decades, LA TIM Metal & Industries Ltd. has established itself as a known name in the steel industry. With the goal to be a leading provider of high-quality coated steel products, we consistently exceed our customer's expectations through continuous innovation, exceptional service and sustainable practices.

With a **vision** to go beyond, to explore innovations to cater to the needs of the growing infrastructure of the country by developing new products thereby creating multiple possibilities for our customers.

**We are committed** to enhancing the durability, aesthetics and performance of steel through advanced coating technologies, while maintaining a strong focus on customer satisfaction, employee well-being and environmental stewardship.

**By delivering superior solutions,** we aim to contribute to the success and growth of our customers, employees and communities, while consistently creating value for our stakeholders.



## **COLOUR COATED STEEL**

Where vibrant shades and hue blend with steel's durability, enriching your vision with rich shades of colours.

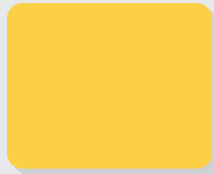
LATIM Colour Coated coils are available in a variety of substrates like Galvanized (zinc coated) & Galvalume (Alu-Zinc coated) & can also be processed on EG (Electro-galvanized) coated, GA (Galvannealed), Aluminium, CRFH (Cold Rolled Full Hard), CRCA (Cold Rolled Close Annealed) etc. LATIM Colour Coated steel is available in wide range of colours and shades. Colour Coated Metal Sheets help in preventing early corrosion of steel and substantially increase the life of the product.

LATIM Colour Coated coils are painted with multiple layers of top and bottom coats. These coils are manufactured in varied thickness and widths. They are coated with various paint types depending on the nature and type of application and durability required. They can be provided in a variety of finishes depending on the requirement of the application and the customer. They can be provided with value added options like Protective Guard Film, cut into slit coils or sheets as per requirement etc. The packaging provided is top class following global standards and which are sea worthy.

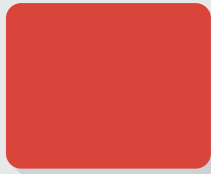
LATIM Colour Coated coils are used in a wide range of applications in Architecture, Building & Construction, Furniture etc. including Roofing, Siding, Cladding, False Ceiling, Wall Panelling, Sandwich Panels, Portable Cabins, Prefab Structures, Fencing & Gating, Doors & Chalkhats, Shutters, Appliances & White Goods, Furniture, Industrial Equipment amongst various others.

# STANDARD COLOUR RANGE

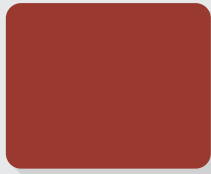
## Solid Range:



RAL 1018 Zinc Yellow



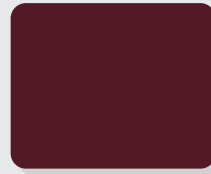
RAL 2008 Bright Red Orange



Brick Red



Seco Red



RAL 3005 Wine Red



RAL 3032 Pearl Ruby Red



Burgundy



RAL 5012 Light Blue



Pepsi / Royal Blue



RAL 5018 Turquoise Blue



Taurus Blue



RAL 6005 Moss Green



RAL 6010 Grass Green



RAL 6011 Reseda Green



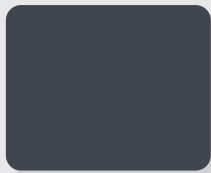
RAL 6016 Turquoise Green



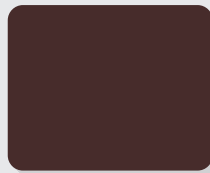
Reliance Green



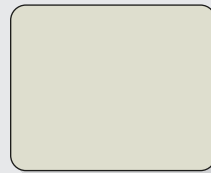
RAL 6036 Pearl Opal Green



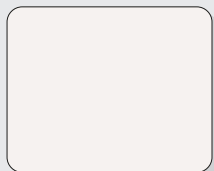
RAL 7015 Slate Grey



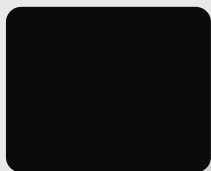
RAL 8017 Chocolate Brown



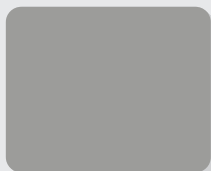
RAL 9002 Grey White



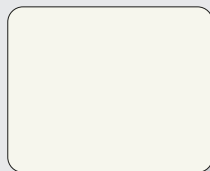
RAL 9003 Signal White



RAL 9005 Jet Black



RAL 9006 White Aluminium

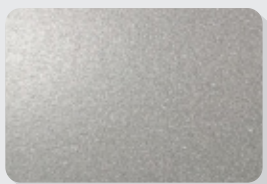


RAL 9010 Pure White

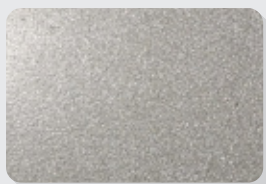
Colours may vary from the shades shown above.



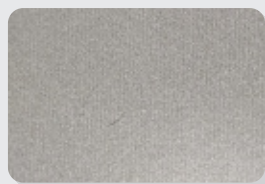
## Metallic Range:



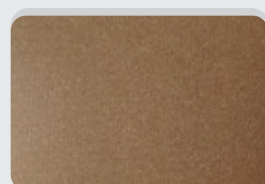
Bright Silver - Matt



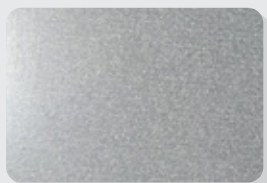
Champagne Gold- Matt



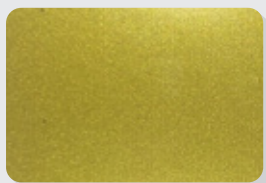
Champagne Silver - Matt



Copper Penny - Matt

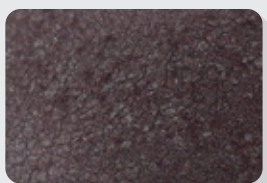


Grey Aluminium - Glossy

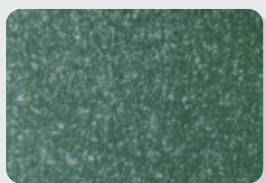


Sunbeam Gold

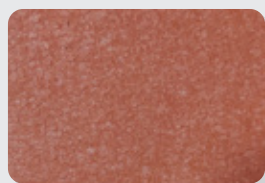
## Wrinkle Range:



Burgundy Wrinkle



Chrome Green - Wrinkle



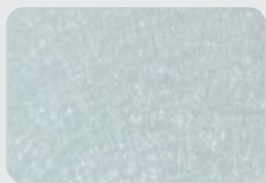
Terracotta - Wrinkle



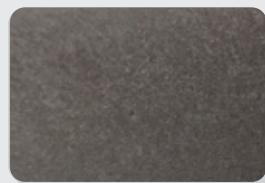
Wine Red - Wrinkle



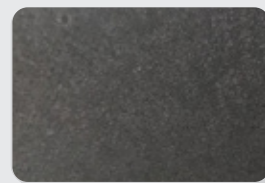
Chocolate Brown - Wrinkle



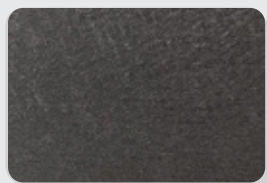
Signal White - Wrinkle



Grev Brown - S. Wrinkle



Grey - S. Wrinkle



Black - S. Wrinkle

Colours may vary from the shades shown above.



## PERFORMANCE TESTING

Scratch Hardness (T/B)	1.5-2 / 1-1.5Kg
Impact Test (in Joules) (thickness based soft material)	As per Standard
Salt Spray Test (specific to coating type)	500-1500 hrs with cross hatch
Erichsen Cupping Test	As per standard
Humidity Test	750-2000 Hrs
T- Bend Test (T= substrate thickness)	Top Coat = 2T & BackCoat = 4T for soft / semihard material. 0T for special requirements
Water Boling Test	As per Standard
Solvent Rub Test (MEK-double rub)	100 DR for non-metallic, 80 DR metallic
Cross Hatch Test	100/100
Max Operating Temp	Up to 140 *C

## PRODUCT SPECIFICATIONS

FG	PPGI/PPGL/PPGA/PPEG/PPAL/PPCR
Thickness (mm)	0.16-1.20mm
Coil ID (mm)	508 mm
Width (mm)	750-1300 mm
Coil Weight (t)	2-7 mt
Substrate	GI/GL/GA/EG/AL/CRFH/CRCA
Primer (micron)	3-12 Subject to substrate & coating type
Top Coating (micron)	10-25
Back Coating (micron)	5-15
Hardness (HRB)	55-65 Soft CQ, 85 and above Hard
Guard Film - Operational (microns)	30-40u

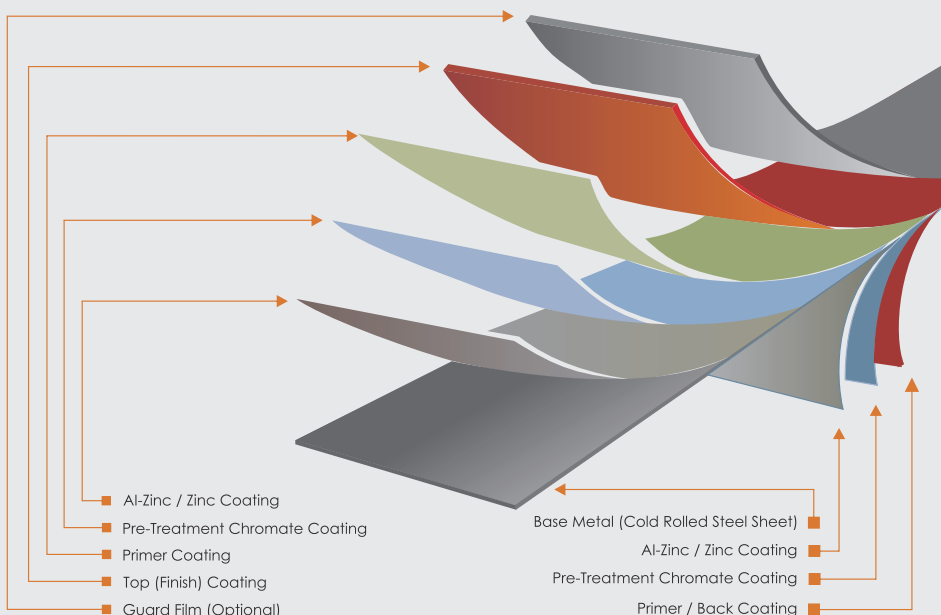
## PAINT SPECIFICATIONS

Primers	Epoxy; PU; Polyester; PVDF, ROHS compliant
Top Coat	Epoxy; PU; Polyester: Regular Modified (RMP)/ Silicon Modified (SMP)/ Super Durable (SDP); PVDF; ROHS Compliant
Back Coat	Epoxy; PU; Polyester; ROHS Compliant
Colour	As per RAL code / Customers Requirement
Gloss @60 degree	Matt -> 30-45% Gloss-> 55-75% High Gloss -> 75% Textures -5-20% Metallic -> Metallic finish

## PAINT PROPERTIES COMPARISON

Properties	RMP	SMP	SUPER / HIGH Durable Polyester	PVDF
Flexibility	Fair	Poor	Good	Good
UV Resistance	Fair	Fair	Good	Excellent
Gloss Retention	Good	Good	Excellent	Poor
Chalking Resistance	Fair	Fair	Good	Excellent
Costs	Lowest	High	Marginal	Very High
Durability Years (under neutral conditions)	5-8	7-8	10	15
SST Hrs.	500-750	750	1000	1000-1500

## ADVANCED PAINT TECHNOLOGY



# LATIM'S HIGH QUALITY COLOURED / PRE-PAINTED GALVANIZED / GALVALUME STEEL COILS CAN BE USED FOR VARIOUS

## APPLICATIONS

Roofing



Cladding



Furniture & Accessories



Rolling Panel & Shutters



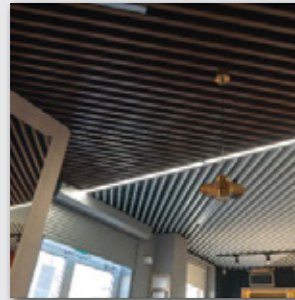
Crimping



Proflex



Metal False Ceiling



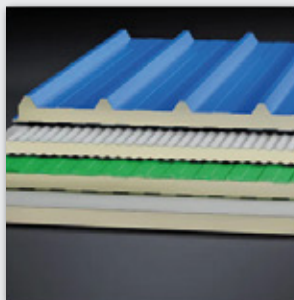
Prefabricated Structure



Portable Cabins



Sandwich Panels



### Ideal for Interior and Exterior Applications.

- Coloured / pre-painted sheet in various profiles available (against specific orders)
- Available in various thickness, sizes and colours





**Corporate Office:**

401, Navkar Plaza, 4<sup>th</sup> Floor, Bajaj Road,  
Vile Parle (West), Mumbai - 400056.

---

**Contact:**

+ 91 8655832957

+ 91 8655832959

---

**Email:**

sales@latimsteel.com

marketing@latimsteel.com

---

**Factory Address:**

Industrial Plot No. 270/271, GIDC,  
Umbergaon, Valsad, Gujarat - 396171.

---

**Website:** [www.latimsteel.com](http://www.latimsteel.com)



**LATIM**  
*Vibrant Shades*  
COLOUR COATED STEEL