



LATIM

SPECTRUM OF POSSIBILITIES

Hardness of Stone, Toughness of Steel.



LATIM

Earthen Sky

STONE COATED STEEL

COMPANY INTRODUCTION

WELCOME TO THE WORLD OF LA TIM GROUP.

The group is built on a foundation of trust, transparency and a commitment to excellence.

The LA TIM Group was established in 1986 and has today grown into many business verticals, giving our partners many opportunities to soar with us.

From Steel to Hospitality and Realty, LA TIM Group brings varied experiences and opportunities to its customers.

We call it a spectrum of possibilities.

LATIM STEEL

Since decades, LA TIM Metal & Industries Ltd. has established itself as a known name in the steel industry. With the goal to be a leading provider of high-quality coated steel products, we consistently exceed our customer's expectations through continuous innovation, exceptional service and sustainable practices.

With a **vision** to go beyond, to explore innovations to cater to the needs of the growing infrastructure of the country by developing new products thereby creating multiple possibilities for our customers.

We are committed to enhancing the durability, aesthetics and performance of steel through advanced coating technologies, while maintaining a strong focus on customer satisfaction, employee well-being and environmental stewardship.

By delivering superior solutions, we aim to contribute to the success and growth of our customers, employees and communities, while consistently creating value for our stakeholders.

STONE COATED STEEL

“It’s where hardness of stone meets toughness of steel.”

LA TIM Metal & Industries Ltd. is an incredible unity of beauty & strength accompanied by innovative technologies. Our stone coated steel roofs offer variety of colors & patterns to choose from which gives our customer sense of satisfaction and helps us to cater the market demands more effectively. Our roofs provide optimum sound and heat insulation as an added advantage. Each individual color or their patterns provides the opportunity to complement the style that will become the hallmark of your project.

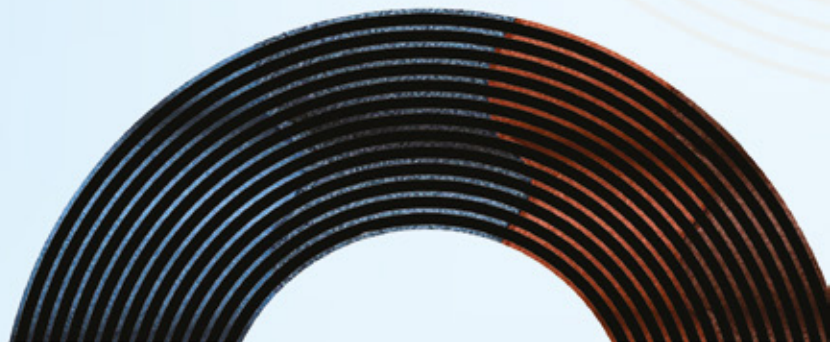
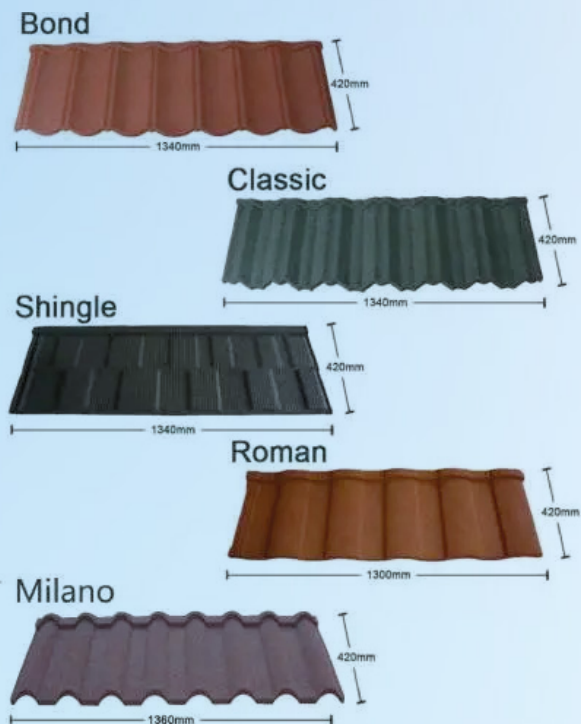
Our Stone Coated Steel Roof is designed and manufactured to withstand all kinds of severe weather such as extreme hot and cold weather, strong wind, and heavy rain.

Our Stone Coated Steel Roofs can protect your home against all the destructive forces of nature because the tiles are designed to overlap and interlock into a horizontal fix system.

The fastenings of this horizontal fix system are done at right angles, thus, creating a roof structure of superior strength that is strong enough to resist hurricane force wind, heavy snowfall, and earthquakes.

The granulated stone chips on the surface give additional weather protection to your roof. LA TIM Metal & Industries Ltd. Stone Coated Steel Roof is a product that can enhance the style of any home or commercial building and give it a lasting beautiful look.

TYPES OF PRODUCTS

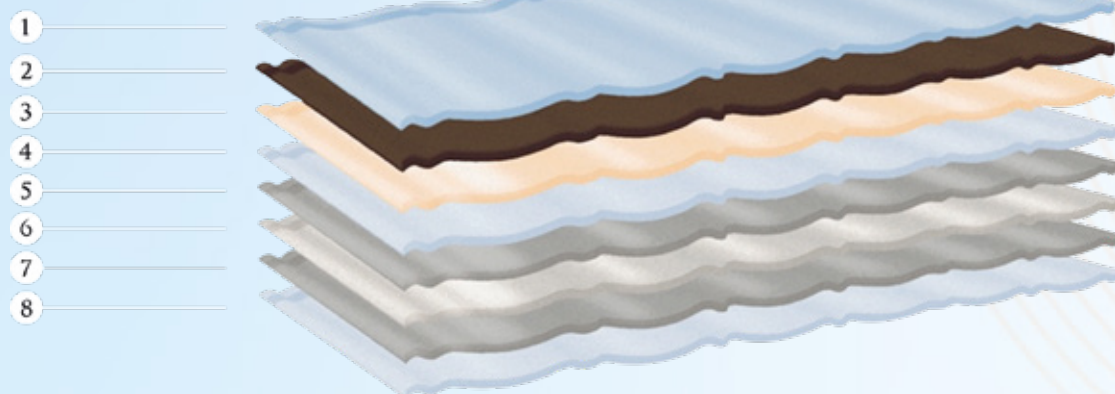


STONE COATED STEEL ROOFING

Super-durability with high-strength Alu-Zinc coated steel sheet as the substrate material and multi-layers protection, it has excellent durability. Therefore, it's rated as the best roofing material.

Characteristic of Stone Coated Steel Roofing

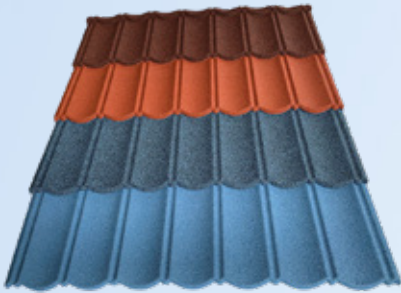
1. **Clear acrylic glazing:** Increase brightness and bonding strength, to prevent rain leakage to the lower layer and granular structure.
2. **Colorful stone:** Cut off UV to protect the steel base, reduce rain noise and improve decorative function.
3. **Acrylic adhesive bonding:** Bonds stone chips and protects the upper and down layer.
4. **Protective:** To protect aluminum zinc layer, enhances corrosion resistance and increase life.
5. **Aluminum zinc:** High heat reflective rate and strongly corrosion resistant; It can increase lifespan and energy saving.
6. **Steel base:** High strength steel, metal construction of colorful stone coated metal roof tile basis.
7. **Aluminum zinc:** High heat reflective rate and strongly corrosion resistant; It can increase lifespan and energy saving.
8. **Protective:** To protect aluminum zinc layer, enhances corrosion resistance and increase life.



FEATURES OF STONE COATED STEEL ROOFING

- 1. Earthquake Resistance:** During earthquakes, it won't fall like general ceramic or cement sheet or tiles thus reduces injuries.
- 2. Light Weight:** Much lighter than ceramic or cement sheets / tiles, hence easier and economical to transport & install.
- 3. Convenient Installation:** Light weight, larger coverage area, simple accessories, flexible and easy to cut, shorter installation time. Installation at low temperatures also possible.
- 4. Economy in Replacement:** They can be installed directly to the existing roof of the old structure without removing original material, thus saving on replacement costs.
- 5. Energy Saving and Environment Friendly:** Heat reflectivity is 1.4-7 times than other roofing material, thus leading to energy conservation. It also uses existing natural environment friendly materials, thus helping ecological conservation.
- 6. Beautiful Colours:** Elegance in Designs: Multiple variety in colours and in profile designs which enhances the aesthetics and makes it more beautiful than other materials.
- 7. Long Lifetime:** Long warranty life as compared to competitive products.
- 8. Other outstanding features:**
 - Thermal Insulation
 - Sound Insulation
 - High pressure & wind resistance
 - Fire Resistance
 - Extreme weather resistance

BOND TILE



Design	Bond
Specifications	1340mm x 420mm
Installed Exposure	1290mm x 370mm
Coverage Area	0.477m ²
Weight	2.2-2.7kg/piece

CLASSIC TILE



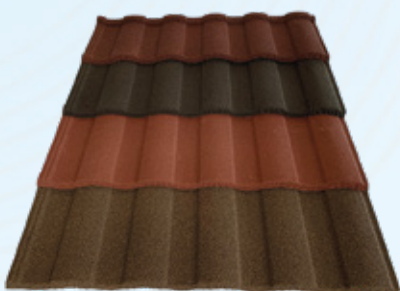
Design	Classic
Specifications	1340mm x 420mm
Installed Exposure	1290mm x 370mm
Coverage Area	0.477m ²
Weight	2.2-2.7kg/piece

SHINGLE TILE



Design	Shingle
Specifications	1340mm x 420mm
Installed Exposure	1290mm x 370mm
Coverage Area	0.477m ²
Weight	2.2-2.7kg/piece

ROMAN TILE



Design	Roman tile
Specifications	1300mm x 420mm
Installed Exposure	1250mm x 370mm
Coverage Area	0.462m ²
Weight	2.2-2.7kg/piece

MILANO TILE



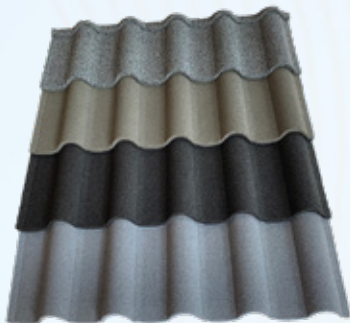
Design	Milano
Specifications	1340mm x 420mm
Installed Exposure	1290mm x 370mm
Coverage Area	0.477m ²
Weight	2.2-2.7kg/piece

WOODEN TILE



Design	Wooden
Specifications	1340mm x 420mm
Installed Exposure	1290mm x 370mm
Coverage Area	0.477m ²
Weight	2.2-2.7kg/piece

DEEP ROMAN TILE



Design	Deep Roman
Specifications	1300mm x 420mm
Installed Exposure	1290mm x 370mm
Coverage Area	0.477m ²
Weight	2.2-2.7kg/piece

STONE COATED STEEL ROOF TILE IN CUSTOMIZED LENGTH

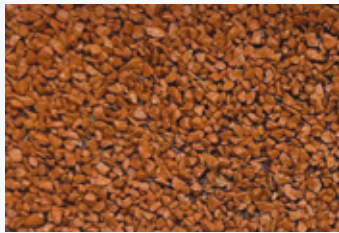
Design	Stone coated metal roof tile
Specifications	850mm width
Coverage Area	(Width*Length) = 0.80* (Actual length-130mm)

MAIN COLOURS

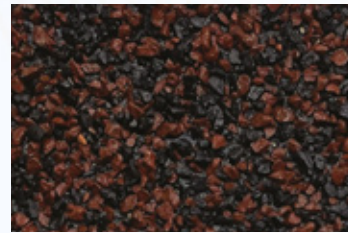
Agate Red



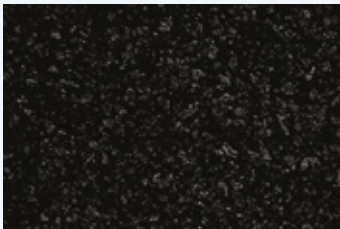
Terracotta



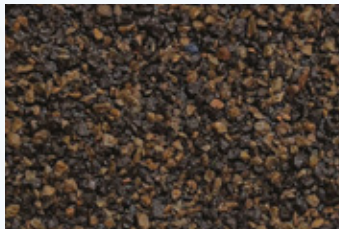
Brick Red



Black



Clay Brown



Black Grey



Corporate Office:

401, Navkar Plaza,
4th Floor, Bajaj Road,
Vile Parle (West),
Mumbai - 400056

Contact:

+ 91 8655832957
+ 91 8655832959

Email:

sales@latimsteel.com
marketing@latimsteel.com

Factory Address:

Industrial Plot NO 270/271,
GIDC, Umbergaon, Valsad,
Gujarat, 396171

Website:

www.latimsteel.com



LATIM
Earthen Sky
STONE COATED STEEL