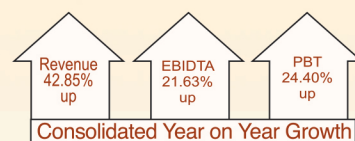


STRENGTHENING INFRASTRUCTURE. BUILDING OPPORTUNITIES.

Since decades, La Tim Metal & Industries has established itself as a known name in **Colour Coated Steel Coils**. Because of its unmatched durability and superior quality, it is used in diverse industries for a variety of applications.

With the government's focus on nation building through Infrastructure development, we are now diversifying our business and proudly announce Phase 1 of the 40 acre La Tim Industrial Park located off Khopoli-Pali Road. We invite industries to set base and take the Nation's infrastructure to the next level with us.



Statement of Standalone and Consolidated Financial Results for the quarter and year ended 31st March, 2022

(Rs. in Lacs)

S.No.	Particulars	Standalone					Consolidated				
		3 months ended on 31/03/2022	Preceding 3 months ended on 31/12/2021	3 months ended on 31/03/2021	Year ended on 31/03/2022	Year ended on 31/03/2021	3 months ended on 31/03/2022	Preceding 3 months ended on 31/12/2021	3 months ended on 31/03/2021	Year ended on 31/03/2022	Year ended on 31/03/2021
		(Audited)	(Unaudited)	(Audited)	(Audited)	(Audited)	(Audited)	(Unaudited)	(Audited)	(Audited)	(Audited)
1	Total Income from Operations (net)	2,067.96	3,492.28	1,890.70	8,983.23	4,550.25	15,808.14	16,732.38	7,688.42	56,997.22	39,898.63
2	Net Profit / (Loss) for the period (before Depreciation, Tax and Exceptional items)	(102.39)	264.58	352.79	571.38	715.76	221.63	731.64	210.31	2,536.69	2,085.48
3	Net Profit / (Loss) for the period (before Tax, Exceptional items)	(104.96)	259.08	348.59	554.36	694.10	174.70	678.17	168.86	2,331.80	1,874.45
4	Net Profit / (Loss) for the period before tax (after Exceptional items)	(104.96)	259.08	348.59	554.36	694.10	174.70	678.17	168.86	2,331.80	1,874.45
5	Net Profit / (Loss) for the period after tax (after Exceptional items)	(82.24)	195.14	269.02	414.63	592.76	95.21	482.79	92.15	1,798.37	1,760.78
6	Total Comprehensive income for the period (Comprising Profit / (Loss) for the period (after tax) and Other Comprehensive Income (after tax)	(82.24)	195.14	269.02	414.63	592.76	94.93	482.79	91.93	1,798.09	1,760.56
7	Paid Up Share Capital	883.14	883.14	883.14	883.14	883.14	883.14	883.14	883.14	883.14	883.14
8	Other Equity	-	-	-	1,516.40	1,190.08	-	-	-	2,635.22	925.44
9	Earning per share of Rs. 10/- each	-	-	-	-	-	-	-	-	-	-
	Basic (in Rs.)	(0.93)	2.21	3.05	4.69	6.71	1.07	5.47	1.04	20.36	19.94
	Diluted (in Rs.)	(0.93)	2.21	3.05	4.69	6.71	1.07	5.47	1.04	20.36	19.94

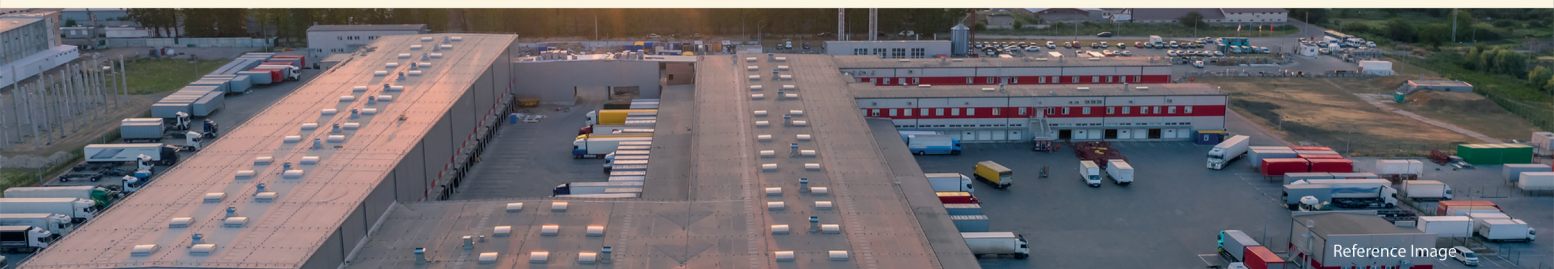
Note:

1. The above is an extract of the detailed format of quarter and year ended financial results filed with the Stock Exchanges under Regulation 33 of SEBI (Listing Obligations and Disclosure Requirements) Regulations, 2015. These financial results were reviewed by the Audit Committee, and were approved by the Board of Directors, in their respective meetings held on 30th May, 2022. The full text of the aforesaid Results is available on the Company's and on the Stock Exchange website: www.bseindia.com

Place: Mumbai

Date: 30th May, 2022

For and on Behalf of
The Board of Directors
Sd/-
Rahul Timbadia
Managing Director
DIN :- 00691457



LA TIM METAL & INDUSTRIES LIMITED

(FORMERLY KNOWN AS DRILLCO METAL CARBIDES LIMITED)

Registered Office: 201, Navkar Plaza, Bajaj Road, Vile Parle (West), Mumbai - 400056

CIN:L99999MH1974PLC017951

Tel. 26202299 / 26203434 Fax: 022 - 26240540,

Email: accounts@latimmetal.com, Website: www.latimmetal.com

